



AMPOULES FILLING & SEALING MACHINE TYPE R915



Standard equipment

- Adjustable infeed magazine
- Product range: 1 – 30 ml
Max . diameter: 52 mm
Output up to: 1.000/h
- One filling station. Dosing by means of seal-less rotary piston pumps made of stainless steel SUS 316L or ceramic.
Filling range: 0,2-2 ml / 1-5 ml / 2-10 ml / 6-30 ml
- Feature „No ampoule – no filling“
- Interlocking safety cabinet
- Change parts set for one ampoule size
- Outfeed magazine

Options

- Special dimensions for outfeed magazine
- Opening station for closed empty ampoules Form D acc. to DIN/ISO 9187
- Inert gas supply before and after
- Laminar flow hood
- Gas compressor
- Pump moistening device
- Diverse filters for gasses and medium
- Filling and stoppering of vials
- IQ/OQ documentation
- Further options on request

Features

The semi-automatic ampoule filling and sealing machine type R915 is suitable for filling any liquid, either under sterile conditions or not.

Its bench top compact design is the ideal solution for clinical trials or small scale production.

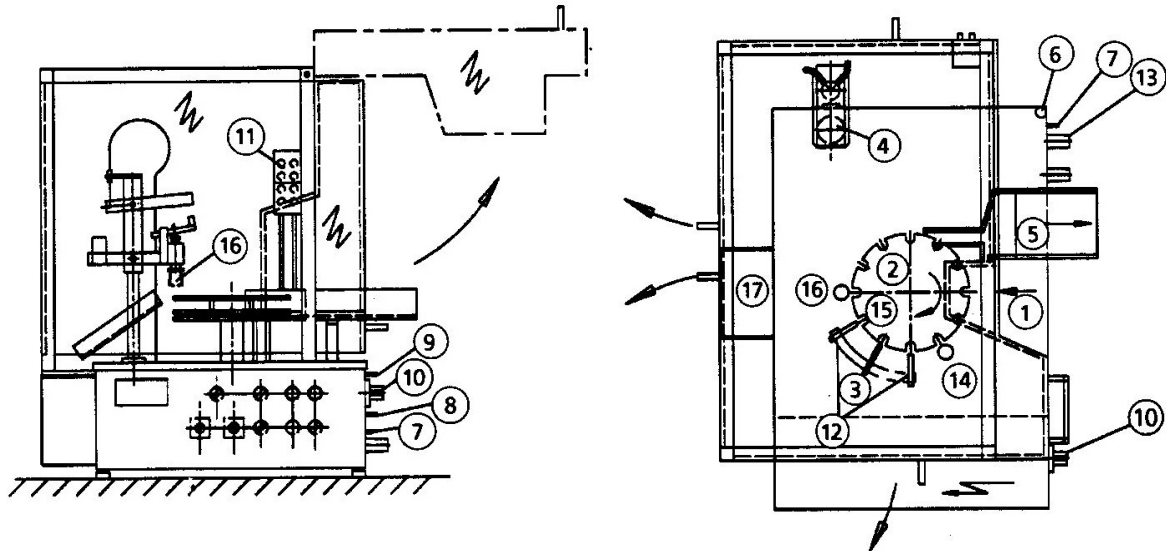
ROTA Verpackungstechnik GmbH & Co.KG

Öflinger Str. 118 - D-79664 Wehr

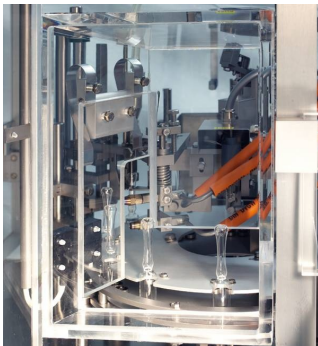
Tel.: +49 7762 708-0 - Fax: +49 7762 708-126

Email: info@rota.de - Web: www.rota.de

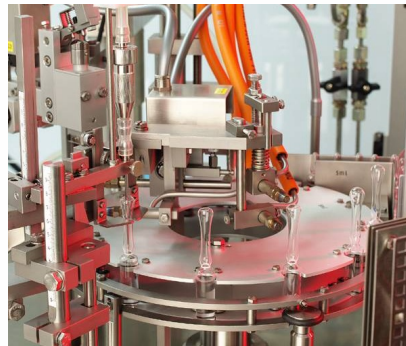
AMPOULES FILLING & SEALING MACHINE TYPE R915



- | | | |
|-------------------------|----------------------------------|----------------------------|
| ① Hand feeding station | ⑦ Compressed air connection | ⑬ Pressure reducer – pump |
| ② Star-wheel | ⑧ Oxygen connection | ⑭ Opening station (option) |
| ③ Filling station | ⑨ Gas connection | ⑮ Pre-heating |
| ④ Filling pump | ⑩ Main switch | ⑯ Closing |
| ⑤ Outfeed magazine | ⑪ Valves for burner adjustment | ⑰ Drawn off tips waste box |
| ⑥ Electrical connection | ⑫ Pre- and post-gassing (option) | |



Ampoules are hand fed into the transport star wheel. The ampoules are then automatically transported over the machine through the opening station (option), pre-gassing (option) filling station where the ampoule necks are centred to the filling needle centre, post-gassing (option) and sealing station. Thus a careful object transport is ensured.



Ampoules are drop-free filled by means of a seal-less rotary piston pumps (accuracy better than $\pm 0.5\%$). The ROTA rotary piston pumps are made of two parts, removable and replaceable within one minute.



After the sealing station, the filled and sealed ampoules are gently pushed out of the transport star wheel into the outfeed magazine. The ampoules can then be discharged from the outfeed magazine by means of suitable trays or by hand.