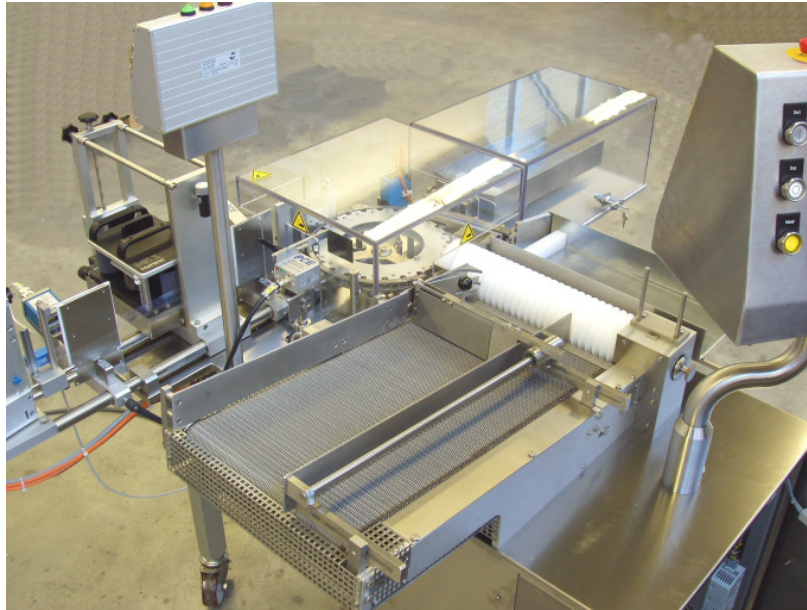




# LABELLING MACHINE FOR AMPOULES AND VIALS

## TYPE RE50 / 100



### **Standard equipment**

Labelling machine for self-adhesive labels

- Infeed magazine
- Working range: Ampoules 1 – 30 ml  
Vials up 52 mm diameter
- Max. speed: RE 50: 3000/h  
RE 100: 6000/h.
- End of tape control
- Strip break control
- Sensor for strip feed
- Label pressing station
- Feature "no container – no labelling"
- One change part set included
- Infeed and outfeed magazine for non-stable containers
- GMP compliant

### **Options**

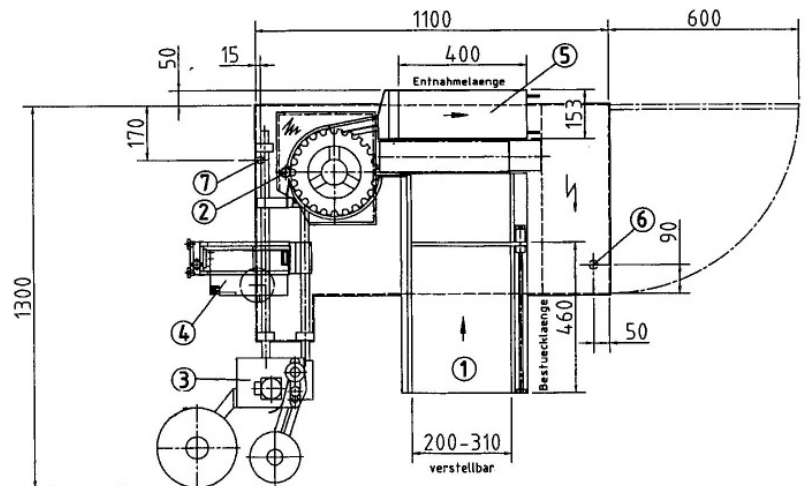
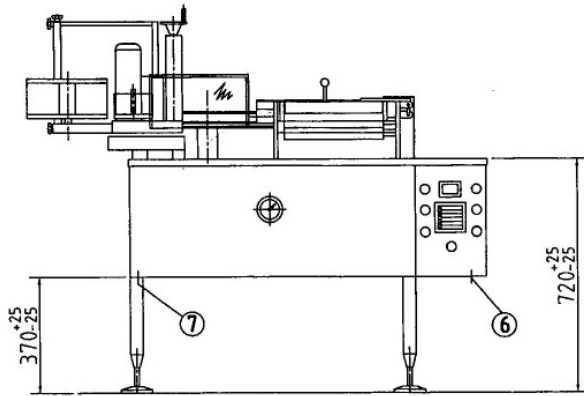
- Machine equipped to label syringes and cartridges
- Hot foil or thermo-transfer printers
- Label presence sensor
- Print detection sensor
- Camera for total label control
- Pharma code sensor
- Colour ring code sensor
- Infeed turn table
- Automatic rejection station
- Special outfeed magazine adapted to customer tray sizes
- Counter for production hours
- Validation documentation
- Other options on request

### **Features**

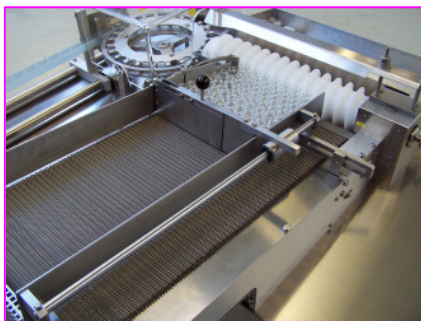
The labelling machines type RE50 and RE100 are specially designed to handle non stable cylindrical containers so that a gentle and smooth transport over the processing stations is guaranteed.

A comprehensive list of optional features and accessories allows this machine to be provided to meet the individual requirements of each customer and application.

# **LABELLING MACHINE FOR AMPOULES AND VIALS** **TYPE RE50 / 100**



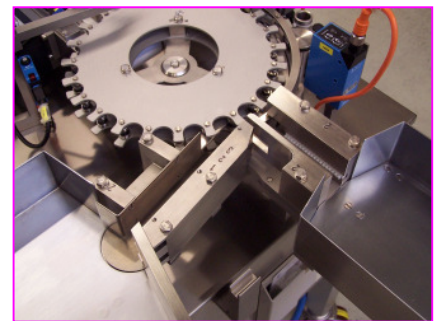
- ① Feeding chute
- ② Label pressing roller
- ③ Labeller
- ④ Printer
- ⑤ Collecting chute
- ⑥ Electric connection
- ⑦ Compressed air connection



Containers are charged to the infeed magazine from trays. The magazine width is infinitely adjustable from 200 – 310 mm, the length is 460 mm. The standard machine is equipped in standard with a label dispensing unit from HERMA. The coil diameter is 300 mm. For coil sizes up to 400 mm motorized pre-winding and web collecting systems are available. By means of a printer the label can be printed with batch number, expiry date, etc.



The machines are available with several sensors such as label presence, ampoule colour rings reader, vial cap colour reader, pharma code reader, print detection, etc...



Containers are collected in an outfeed magazine of 153 mm outer width and 400 mm length. Different dimensions adapted to specific tray sizes are available. An optional rejection station collects all kind of rejected containers.