



(C) Lotion bowls

Manufactured from 304 grade stainless steel, these lotion bowls are supplied with a rolled top edge and flat base. They are crevice- and pit-free and polished throughout.

DOS: Discontinued once sold. Please contact our team to enquire about available quantities remaining.

Item code	Capacity (litres)	a	b	c	Weight (gm)
LOB4120P (DOS)	0.3	120	60	55	115
LOB4140P (DOS)	0.5	140	70	65	155
LOB4180P (DOS)	1	180	90	75	260
LOB4240P (DOS)	3.5	240	95	110	400

(D) Wash basin

Manufactured from 304 grade stainless steel, this wash basin is supplied in one piece with a flat base and a rolled lip. It is crevice- and pit-free and polished throughout.

Item code	Capacity (litres)	a	b	c	Weight (gm)
WAB4360P (DOS)	3	360	160	85	390

Trays

Shallow trays

Manufactured from 304 grade stainless steel, with several sizes available in 316L grade, these trays are supplied in one piece, with radiused corners. They are crevice- and pit-free, polished throughout, and have a rim approximately 10 mm wide.



Item code	Length (mm)	Width (mm)	Depth (mm)	Weight (gm)
TRA4157S (DOS)	157	162	10	165
TRA4215S	215	160	10	214
TRA4300S	300	200	10	404
TRA4324S (DOS)	325	317	10	665
TRA4325S (DOS)	325	265	10	550
TRA4327S (DOS)	325	234	10	495
TRA4360S	360	240	10	629
TRA4385S	385	210	10	706
TRA4400S	400	270	10	706
TRA4440S (DOS)	440	325	10	1015
TRA4451S	445	350	10	1059
TRA4900S	490	320	19	1161
TRA4495S (DOS)	495	325	10	1000
TRA4500S (DOS)	500	162	10	530
TRA4530S	530	325	10	1150
TRA6290S (DOS)	290	210	10	425
TRA6320S (DOS)	320	275	10	700
TRA6415S (DOS)	415	240	10	690

Deep trays

Manufactured from 304 grade stainless steel, with several sizes available in 316L grade, these trays are supplied in one piece, with radiused corners. They are crevice- and pit-free and polished throughout.

Item code	Length (mm)	Width (mm)	Depth (mm)	Weight (gm)
TRA4220D	220	150	45	310
TRA4395D	395	280	70	1000
TRA4450D	445	350	25	1135
TRA4530D	530	325	100	2050
TRA4531D	530	325	150	2375

Note: part codes beginning 'TRA4' are supplied in 304 stainless steel, part codes beginning TRA6 are supplied in 316 stainless steel.

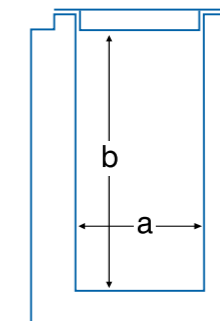
DOS: Discontinued once sold. Please contact our team to enquire about available quantities remaining.



Water jacketed vessels

These stainless steel water jacketed vessels are available in 316L stainless steel, with a 304 stainless steel 0.1 bar low pressure water jacket. They are suitable for use with a non-pressurised water supply with hot or cold water for heating or cooling. These vessels are supplied with a 1/4" BSP water inlet at the bottom of the jacket and a 1/2" BSP outlet at the top. They have crevice- and pit-free interiors and are polished throughout.

Item code	Capacity (ltr)	a (mm)	b (mm)
VEJ6002P	2	130	170
VEJ6005P	5	175	230
VEJ6006P	6	175	270
VEJ6008P	8	200	270
VEJ6010P	10	220	270
VEJ6015P	15	267	275
VEJ6020G	20	265	390
VEJ6025G	25	300	390
VEJ6030G	30	300	445
VEJ6050G	50	350	535



Trays

Shallow trays

Manufactured from 304 grade stainless steel, with several sizes available in 316L grade, these trays are supplied in one piece, with radiused corners. They are crevice- and pit-free, polished throughout, and have a rim approximately 10 mm wide.



Deep trays

Manufactured from 304 grade stainless steel, with several sizes available in 316L grade, these trays are supplied in one piece, with radiused corners. They are crevice- and pit-free and polished throughout.

Item code	Length (mm)	Width (mm)	Depth (mm)	Weight (gm)
TRA4220D	220	150	45	310
TRA4395D	395	280	70	1000
TRA4450D	445	350	25	1135
TRA4530D	530	325	100	2050
TRA4531D	530	325	150	2375

Note: part codes beginning 'TRA4' are supplied in 304 stainless steel, part codes beginning TRA6 are supplied in 316 stainless steel.

DOS: Discontinued once sold. Please contact our team to enquire about available quantities remaining.



Pressure vessels

Pharma Hygiene Products manufacture pressure vessels suitable for lab scale/small batch production environments.

The types of pressure vessel we offer are:

- Vessel with internal pressure
- Vessel with internal vacuum pressure
- Pressurised heating or cooling jacket, with liquid in the jacket, with no pressure in the vessel
- Pressurised vessel with pressurised liquid heating jacket

Please note that to fall within the necessary Sound Engineering Practice specifications, Volume multiplied by Pressure must be equal to or less than 50.

Polypropylene vessels

Pharma Hygiene Products can supply a range of mobile polypropylene vessels for products that cannot come into contact with stainless steel.

These vessels have welded seams and are supplied with drop on lids. An external stainless steel band can be added with two carrying handles to aid moving when empty. A mobile frame set on four castors (two braked) is an optional extra.

Propeller or high shear mixers can also be supplied, and the vessels are available in various sizes.

Please enquire for further information.



Mobile mixers

Manufactured from 304 grade stainless steel, with 316L grade contact parts, these mixers are designed for use with any open vessel of suitable dimensions.

Available with either a high-shear mixing head for mixing emulsions, or a propeller mixing head for mixing free dissolving powders and for general mixing.

The mixing head is mounted on a mobile stand with painted hydraulic cylinder (manually operated), and the control panel is IP55 rated and constructed from stainless steel. Mixers can be specified with 3-phase or single phase power options.

Safety interlocks and a motor shroud are further options.



High shear mixer

Item code	Model	Operating rpm
CSP-HM	Mobile high-shear mixer	2900
CSP-PM	Mobile propeller mixer	1400



Integrated mixers and agitators

Pharma Hygiene Products can supply a wide variety of mixers and agitators, and mount them on our standard and custom vessels and containers to meet your specific requirements.

We offer high-shear mixers for mixing emulsions, propeller mixers for free dissolving powders, as well as general mixing, and slow agitators for keeping products suspended. All can be supplied in varying power and speed specifications.

Please enquire for further information.

Pharma Hygiene Products offer a range of stainless steel measuring and pouring equipment. Quality of material and construction is what sets us apart from our competitors.



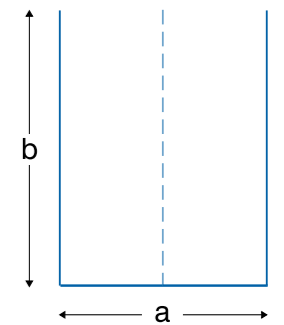
Measuring jugs

Heavy duty measuring jugs (A)

Manufactured from 304 and 316L grade stainless steel, these jugs are straight sided, graduated and come with a pouring spout and closed side handle. They have crevice- and pit-free interiors and are polished throughout.

Item code	Capacity (litres)	a	b	Handle	Graduation	Weight (gm)
JUM*0.5G	0.5	75	135	SIDE	0.1-0.5/0.1	285
JUM*001G	1	100	135	SIDE	0.2-1/0.2	475
JUM*002G	2	135	170	SIDE	0.2-2/0.2	690

Note: In the item code above replace the * with 4 if 304 grade is required, or with 6 if 316L grade is required.



Light duty measuring jugs (B)

Manufactured from 304 grade stainless steel, these jugs are tapered and come with either an open or closed handle. They are graduated in pints and litres, have crevice- and pit-free interiors and are polished throughout. The option of rimmed feet is available with the closed handle version from 0.5 litre upwards.

Item code	Capacity (litres)	a	b	c	Handle	Graduation	Weight (gm)
MEA40.1G	0.1	75	40	45	OPEN	0.05-0.1/0.05	40
MEA4.25G	0.25	100	50	70	OPEN	0.05-0.25/0.05	65
ME*40.5G	0.5	120	60	110	OPEN/CLOSED	0.05-0.5/0.1	120
ME*4001G	1	150	75	135	OPEN/CLOSED	0.1-1/0.1	200
ME*41.5G	1.5	155	85	150	OPEN/CLOSED	0.1-1.5/0.1	290
ME*4002G	2	170	85	200	OPEN/CLOSED	0.2-2/0.1	320

Note: In the item code above replace the * with an A if an open handle is required, or with a C if a closed handle is required. For a rimmed foot, replace G with R.

